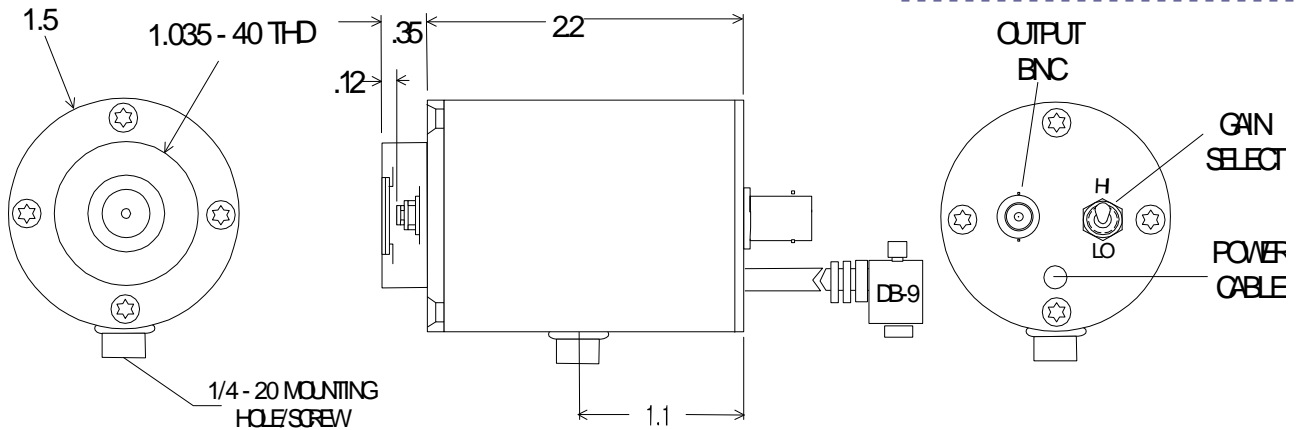
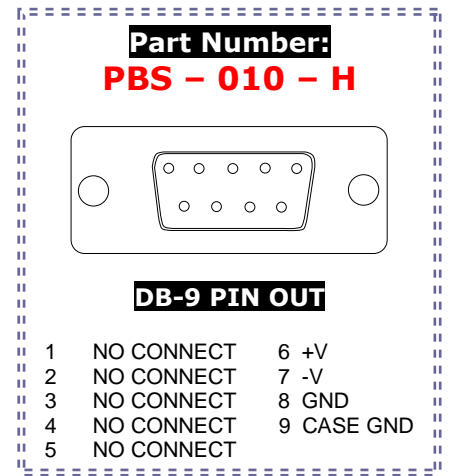
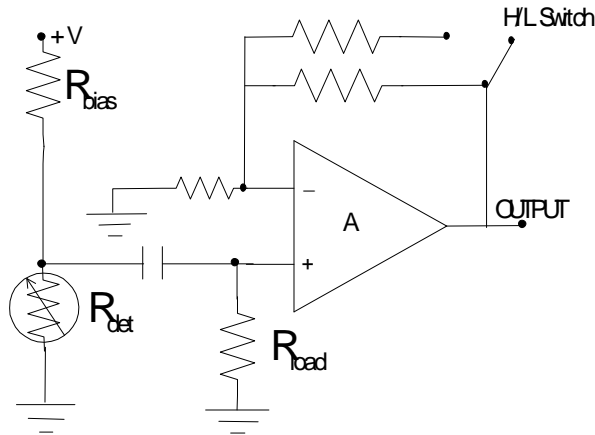


## PBS - SERIES PHOTOCONDUCTOR / RECEIVER



**Application Note** This unit is a high performance photoconductor/receiver operated at ambient temperature with a dual gain voltage amplifier. The detector's bias voltage is linked to the amplifier power supply and no additional biasing is necessary. The PC/AMP is an AC coupled dual gain detector system requiring a modulated input signal for operation.

### SPECIFICATIONS

<b>Detector Type</b>	<b>1 mm x 1 mm PBS</b>
<b>Operating Temperature - °C</b>	<b>22</b>
<b>Operating Wavelength - μm</b>	<b>1.0 - 2.8</b>
<b>Responsivity - V/W @ 2.6</b>	<b><math>2 \times 10^7 / 10^6</math></b>
<b>Noise - V/Hz<sup>1/2</sup> @ 400.</b>	<b><math>2 \times 10^{-5} / 10^{-6}</math></b>
<b>NEP - W/Hz<sup>1/2</sup> @ 2.6, 400</b>	<b><math>1 \times 10^{-12}</math></b>
<b>Bandwidth (-3dB) - Hz</b>	<b>5 - 1k</b>
<b>Power Requirements</b>	<b>+/- 9 VDC to +/- 15 VDC</b>
<b>Connections</b>	<b>BNC signal output. Shielded power cable terminated with a DB-9 connector directly couples the unit with the PS -1 Low Noise Power Supply.</b>

*RoHS Compliant*